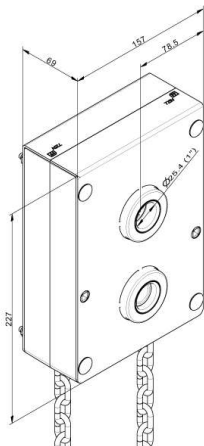


725V Chain hoist

Images :



Description :

Chain hoist
 1:4, incl. 8 m chain, directly on shaft



- Full package quantity : 1
- Weight/unit : 7,5kg
- Action : Replaces current 725
- Material : Cast steel inside, steel/plastic cover
- Marking : 725V FF
- Max. door weight : 700kg
- Length : 157x227x69mm
- Inside diameter : 1", 25,4mm
- Application : Max. unbalance 5%. Doors higher than 4m need extra chain.
- Function : Cast steel toothed wheels, steel bearings, steel side plates, plastic distance holders for low noise. This chain hoist is suitable for 1 inch (25.4mm) keyed shaft and is delivered with 8 meter hand chain, chain stop and fixing material.
- Dimensions (width, height, thickness) : 157x227x69 mm
- Units : piece (1)
- Usage : Industrial
- Availability : FFEU
- Price : € 48,00
- Related : 703ST - Coupler
 720-4 - Chain hoist